

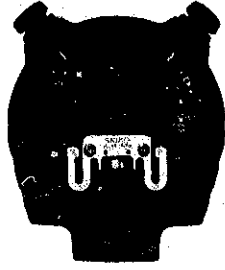
SEIKO

DIGITAL QUARTZ

Cal. S024A , S025A

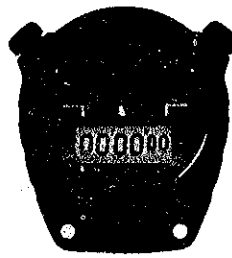
**PARTS
CATALOGUE**

Cal. S024A, S025A

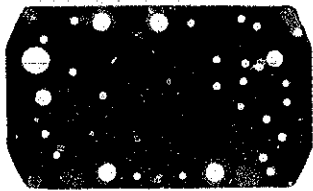


Cal. S024A

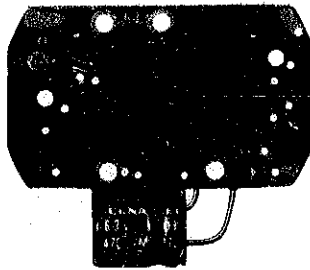
1/2



Cal. S025A



4000 043



4000 044



4245 022



4245 056



4270 442



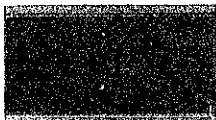
4313 054



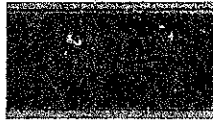
4313 442



4446 011



☆4510 266



☆4510 267



☆Maxell SR41W



012 924

2/3

Cal. S024A, S025A

Characteristics

	Cal. S024A	Cal. S025A
Casing diameter	-----	-----
Maximum height	-----	-----
Frequency of quartz crystal oscillator	32,768 Hz (Hz=Hertz Cycles per second)	
Display medium	Nematic liquid crystal, FE-Mode	
Regulation system	Rotary step switch	Trimmer condenser
Additional mechanism	Time and calendar function	-----
	Stopwatch function	
	-----	Solar battery

PART NO.	PART NAME	PART NO.	PART NAME
4000 043	Circuit block (Cal. S024A)		
4000 044	Circuit block (Cal. S025A)		
4245 022	Side switch spring		
4245 056	Front switch spring (Cal. S024A)		
4270 442	Battery connection (-) (Cal. S024A)		
4313 054	Connector (Cal. S025A)		
4313 442	Connector (Cal. S024A)		
4446 011	Crystal unit cushion		
☆ 4510 266	Liquid crystal panel (Cal. S024A)		
☆ 4510 267	Liquid crystal panel (Cal. S025A)		
012 924	Circuit block screw		
☆Maxell SR41W ☆U.C.C. 392 ☆SONY EVEREADY 392	Silver oxide battery (Cal. S024A)		

Remarks :

Liquid crystal panel

☆4510 266(Cal. S024A) } Be sure that combination between the color of panel cover and liquid
 ☆4510 267(Cal. S025A) } crystal panel should be matched according to the "SEIKO Quartz
 Casing Parts Catalogue".

Battery

☆Maxell SR41W } The substitutive battery might be added to the applied battery in the future.
 ☆U.C.C. 392 } In that case, please refer to separate "BATTERY LIST FOR SEIKO
 ☆SONY EVEREADY 392 } QUARTZ WATCHES".