

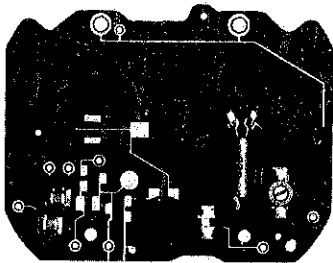
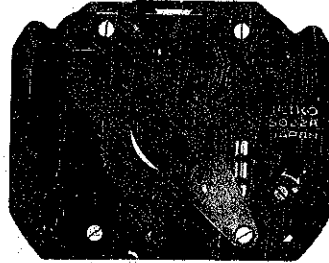
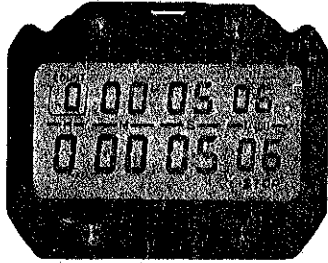
SEIKO

DIGITAL QUARTZ

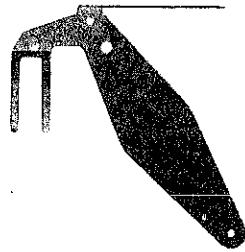
Cal. S022A

PARTS LIST

Cal. S022A



4001 201



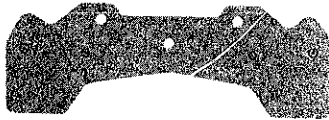
4225 200



4246 201



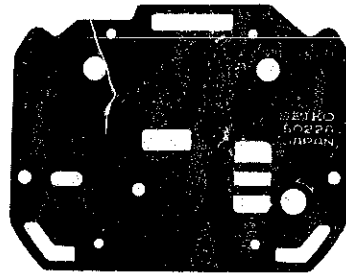
4270 200



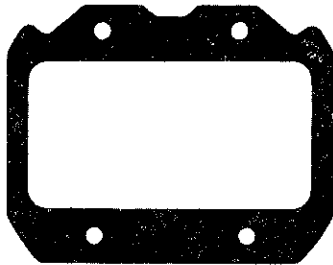
4293 200



4313 200



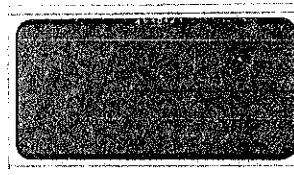
4398 203



4398 205



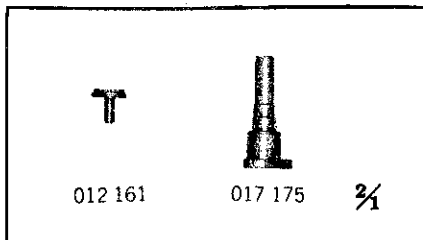
4450 200



4510 121



☆U.C.C. 301



012 161

017 175

3/4

Cal. S022A

Characteristics

Casing diameter : 34.3×43.0 mm
 Maximum height : 9.4 mm without battery
 Frequency of quartz crystal oscillator : 32,768 Hz (Hz=Hertz Cycles per second)
 Stopwatch display : Digital Display System showing hour, minute, second and 1/100 second up to 10 hours on both the upper row and the lower row. The standard lap time and the section lap time are displayed by button operation.
 Count display : It indicates the number of times that the lap time is measured.
 Display medium : Nematic Liquid Crystal, FE-Mode
 Regulation system : Trimmer condenser
 Battery life indicator : All the digits in the display begin flashing.

PART NO.	PART NAME	PART NO.	PART NAME
4001 201	Circuit block		
4225 200	Holding spring for battery		
4246 201	Ground terminal		
4270 200	Battery connection (-)		
4293 200	Switch cock		
4313 200	Connector		
4398 203	Battery guard		
4398 205	Liquid crystal panel frame		
4450 200	Switch lever		
4510 121	Liquid crystal panel		
012 161	Module fixing screw		
017 175	Module fixing tube		
☆U.C.C.301 } ☆Maxell SR43SW }	Silver oxide battery		

Remarks :

Battery

☆Maxell SR43SW }The applied battery for this calibre might be added the substitutive in the future.
 ☆U.C.C.301 }

In that case, please refer to separate "BATTERIES FOR SEIKO QUARTZ WATCHES".

☆⇨Please see remarks.
 Part numbers in light letters are not shown in photos.