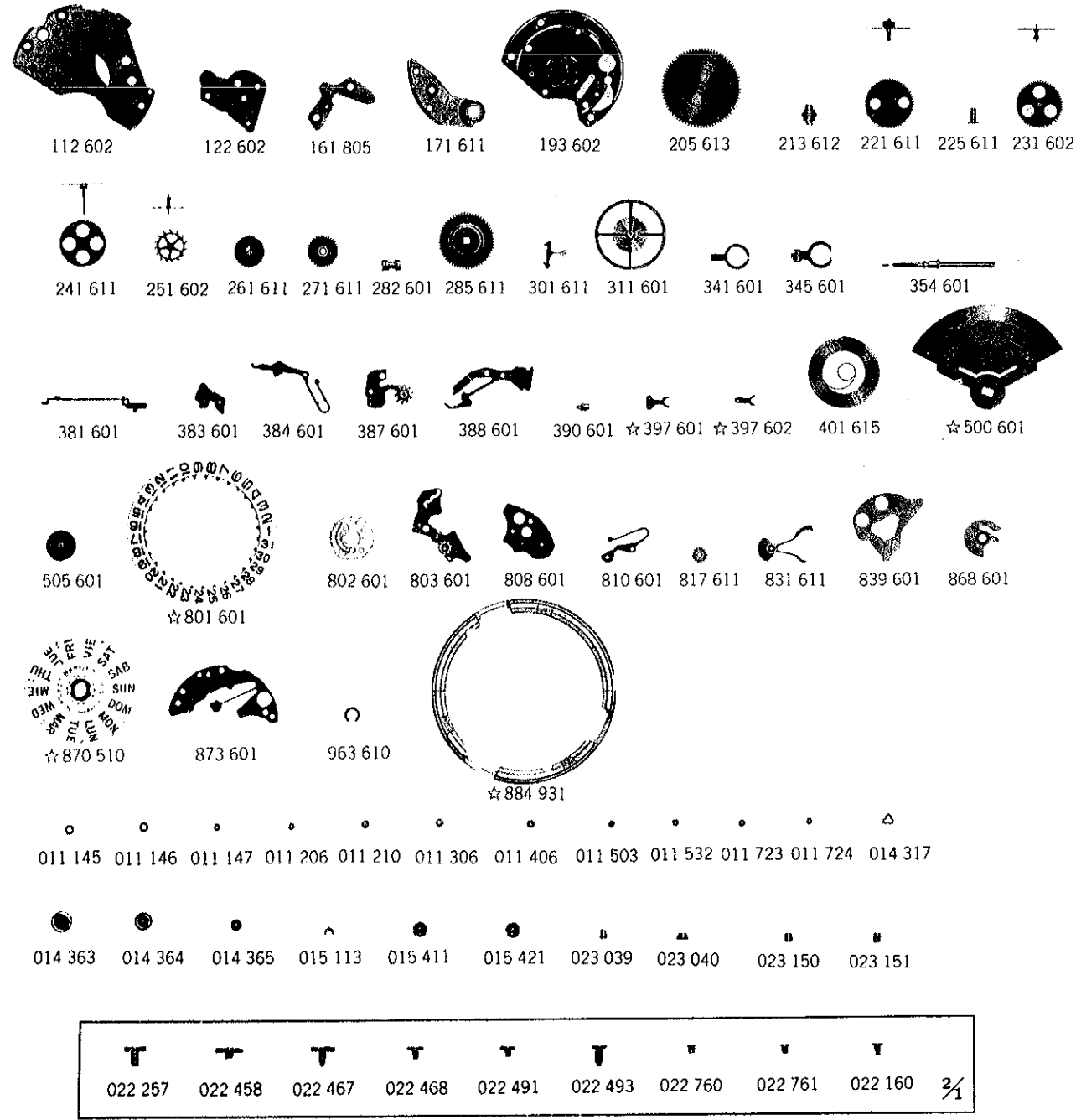


Cal. 6319A

Characteristics

Casing diameter: ϕ 27.0 mm
 Maximum height: 5.2 mm
 Vibration per hour: 21,600
 Automatic winding with sweep second
 Calendar (day & date)
 Instant setting device for day & date calendar
 "Diashock" Shock Resistant Device



Catalog No.

Calibre No.		Jewels	Style Name	
6319A		21j		
⇒ Basic Calibre 6309A 17j Catalog No. 63-09-1				
PART NO.	PART NAME	PART NO.	PART NAME	
112 602	Barrel & train wheel bridge	014 364	Diashock lower frame	
122 602	Center wheel bridge	014 365	Diashock hole jewel with frame	
161 805	Pallet cock	015 113	Diafix spring	
171 611	Balance cock	015 411	Diafix upper hole jewel with frame for escape wheel	
193 602	Framework for automatic device with ball-bearing	015 421	Diafix upper hole jewel with frame for third wheel	
205 613	Complete barrel with arbor	022 257	Center wheel bridge screw	
213 612	Barrel arbor	022 257	Setting lever spring screw	
221 611	Center wheel & pinion	022 458	Screw for oscillating weight	
225 611	Cannon pinion	022 467	Ratchet wheel screw	
231 602	Third wheel & pinion	022 468	Pallet cock screw	
241 611	Fourth wheel & pinion	022 468	Framework screw for automatic device with ball-bearing	
251 602	Escape wheel & pinion	022 468	Date driving wheel screw	
261 611	Minute wheel	022 491	Minute wheel bridge screw	
271 611	Hour wheel	022 493	Barrel & train wheel bridge screw	
282 601	Clutch wheel	022 493	Balance cock screw	
285 611	Ratchet wheel	022 760	Date dial guard screw	
301 611	Jewelled pallet fork & staff	022 760	Day jumper screw	
311 601	Balance complete	022 761	Dial screw	
341 601	Regulator	022 160	Stud screw	
345 601	Stud holder	023 039	Tube for framework screw of automatic device	
354 601	Winding stem	023 040	Tube for pallet cock screw (recessed type)	
381 601	Click	023 150	Tube for pallet cock screw (cylinder type)	
383 601	Setting lever	023 151	Tube for barrel & train wheel bridge screw	
384 601	Yoke (Clutch lever)			
387 601	Minute wheel bridge			
388 601	Setting lever spring			
390 601	Setting lever axle			
☆397 601	Lever for unlocking stem A			
☆397 602	Lever for unlocking stem B			
401 615	Mainspring with slipping attachment			
☆500 601	Oscillating weight			
505 601	Transmission wheel			
☆801 601	Date dial			
802 601	Date driving wheel			
803 601	Setting wheel lever complete			
808 601	Date dial guard A			
810 601	Date jumper			
817 611	Intermediate date wheel			
831 611	Pawl lever with jewel			
839 601	Holder for transmission wheel & pawl lever			
868 601	Day finger			
☆870 510	Day star with dial disk			
873 601	Day jumper			
☆884 931	Holding ring for dial			
963 610	Snap for day star with dial disk			
011 145	Upper hole jewel for center wheel			
011 146	Lower hole jewel for center wheel			
011 147	Upper hole jewel for transmission wheel			
011 206	Diafix cap jewel			
011 210	Diashock cap jewel			
011 306	Upper hole jewel for fourth wheel			
011 406	Lower hole jewel for escape wheel			
011 503	Upper hole jewel for pallet			
011 532	Lower hole jewel for third wheel			
011 723	Lower hole jewel for pallet			
011 724	Lower hole jewel for transmission wheel			
014 317	Diashock spring			
014 363	Diashock upper frame			

☆⇒ Please see remarks.

☆⇒ Please see remarks on the next page.

Calibre No. 6319A	Jewels 21j	Style Name
⇨ Basic Calibre 6309A 17j Catalog No. 63-09-1		

Remarks :

Lever for unlocking stem

- ☆397 601.....Used for the one-piece water-resistant case with the dial whose external diameter is **27mm** or longer.
(When the dial is shaped other than round, the radius is to be measured in the direction of the lever for unlocking stem.)
- ☆397 602.....Used for the one-piece water-resistant case with the dial whose external diameter is less than **27mm**.
(When the dial is shaped other than round, the radius is to be measured in the direction of the lever for unlocking stem.)

Date dial

- ☆801 601.....Used when both the crown and the calendar frame are located at **3** o'clock position.
If any other type of date dial is required, specify ① Cal. No. ② the crown position ③ the calendar frame position and ④ the dial No.

Day star with dial disk

- ☆870 510(English↔Spanish).....Used when both the crown and the calendar frame are located at **3** o'clock position.
If any other type of day star with dial disk is required, specify the number printed on the disk.

Holding ring for dial

- ☆884 931.....The type of a holding ring for dial is determined based on the design of cases and dials. Check the case number and refer to "**SEIKO Casing Parts List**" to choose a corresponding holding ring for dial.

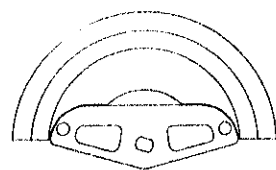
Oscillating weight

- ☆500 601.....This oscillating weight is interchangeable with the one for movements of calibre 61 series listed below, and the interchangeability is limited within the listed calibres.

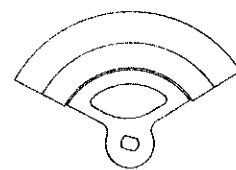
Oscillating weight Cal. No.	500 620	500 622	500 601
6105 A & B			
6106 B & C			
6117 A & B	V	V	V
6118A			
6119 B & C			
6109A	V	V	V
63 Series	—	—	V

V : Interchangeable
— : Not interchangeable

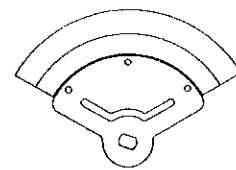
Form of oscillating weight



500 620



500 622



500 601