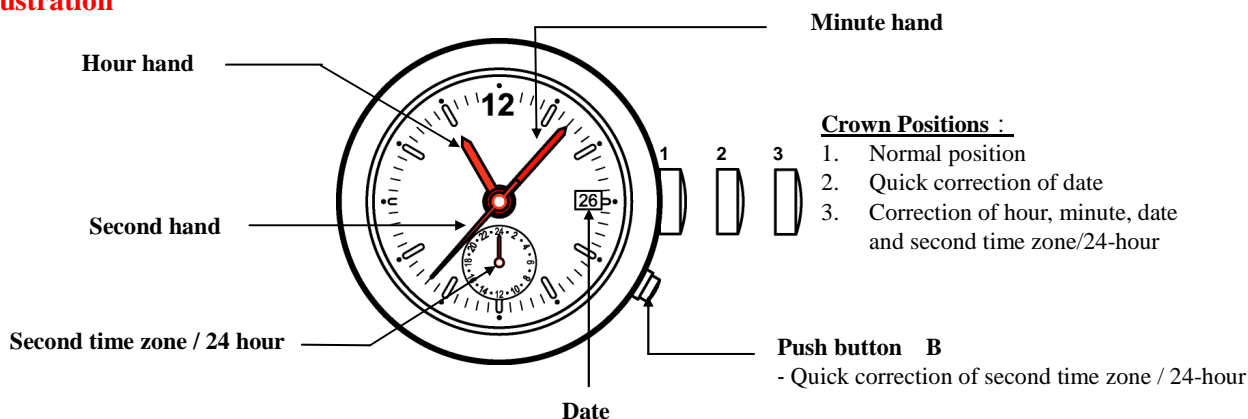


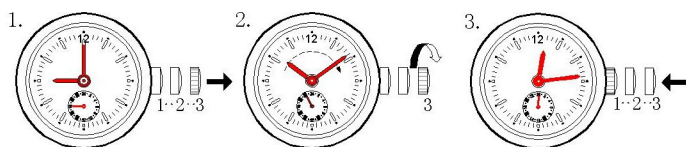
**Calibre : 9232 / 1940**

**Function : Date, Second time zone / 24-hour**

**Illustration**



**A. Set the time - Hour, Minute and 24 Hour**



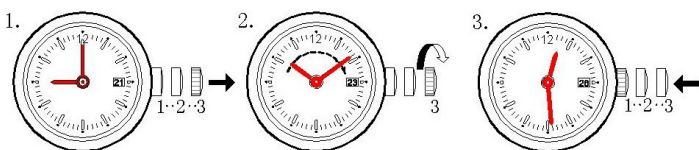
1. Pull the crown out to position 3.
2. Turn the crown clockwise to set the hour, minute and 24-hour hands to the desired time.
3. Push the crown back to position 1 .

**B. Set the Second Time Zone**



1. Set the crown at position 1.
2. Press B step-by-step to advance the hand of the second time zone by one hour per step until the desired time is set.
3. Stop pressing the button after finished the setting.

**C. Set the Date**



1. Pull the crown to position 3 .
2. Turn the crown clockwise. The date will advance 1 day when the time reaches 00:00midnight. Continue to turn the crown until the desired date is set.
3. Push the crown back to position 1.



**Quick Correction of Date :**

1. Pull the crown out to position 2 .
2. Turn the crown clockwise step-by-step to the desired date.
3. Push the crown back to position 1 .

**!! Attention !!** : please Do Not set it between 21:00 and 00:30 midnight

**Battery :** 371 – SR920SW