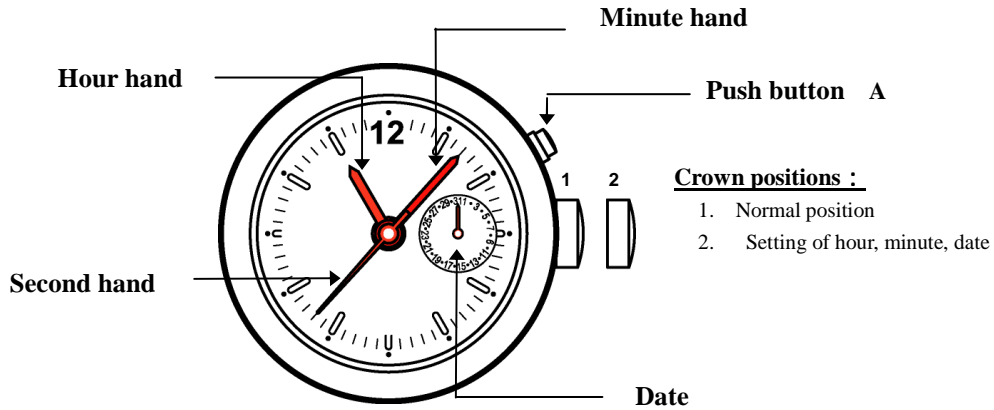


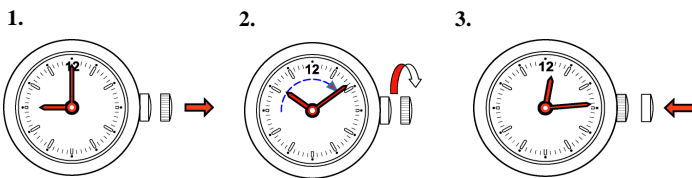
Calibre : 9231 / 1430

Function : Hour, Minute & Second hands, Date

Illustration

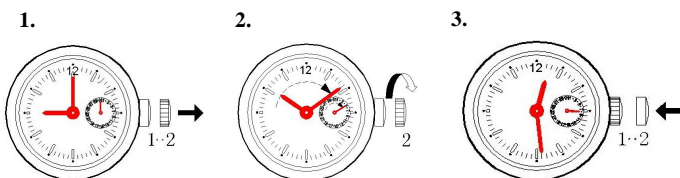


A. Set the time – Hour, Minute



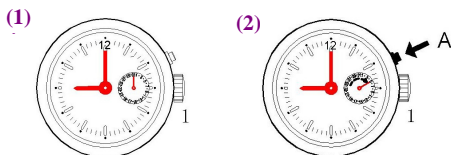
1. Pull the crown to position 2.
2. Turn the crown clockwise to set the hour / minute hands to the desired time.
3. Push the crown back to position 1 .

B. Set the Date



1. Pull the crown to position 2 .
2. Turn the crown clockwise. Continue to turn the crown until the desired date is set.
3. Push the crown back to position 1.

Quick Correction of Date :



1. Set the crown to position 1 .
2. Press the button A step-by-step to advance the date until the desired date is set.

!! Attention !! : The date advances at 00:00 midnight, not 12:00 noon.

Battery : 371 - SR 920 SW